

Linen Smock Dress Tutorial and Free Pattern

Description









This calf-length smock dress with long sleeves is crafted from pure [deep brown linen](#), it feels luxuriously soft and is really comfortable to wear. Perfect for lounging around, it'll look especially comfy paired with a chunky cardigan to keep you extra cozy in colder weather.

This dress has a simple cut with some lovely details such as a round neck, a back button loop closure, slightly gathered sleeves with button loop cuffs and gathered bodice panels which makes it suitable for larger cupped ladies.

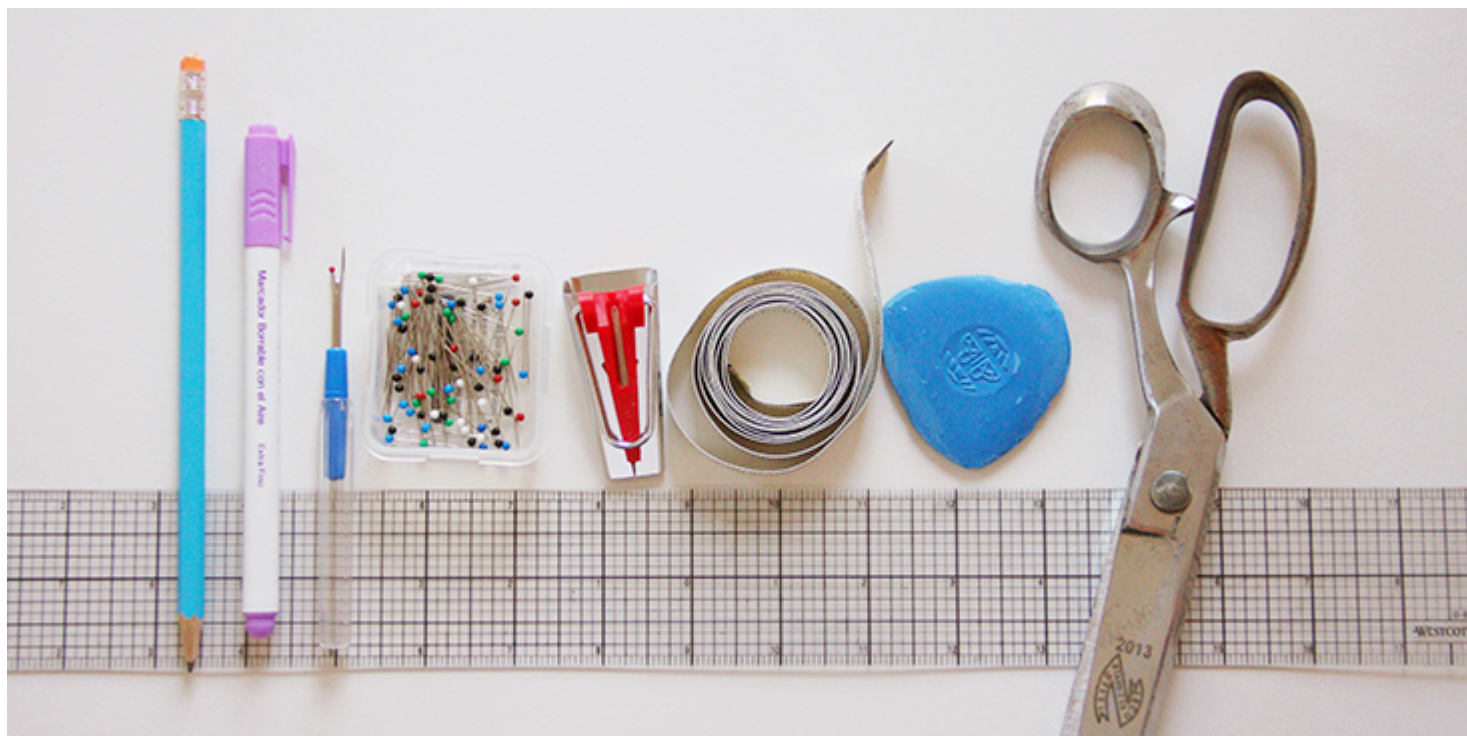
Materials



3 yards of [IL019 POTTING SOIL Softened Medium-Weight Linen](#)

Matching sewing thread, contrasting thread (for gathering), 3 buttons, medium weight fusible interfacing (for the facing)

Tools



Pattern paper, pen, fabric marker, scissors, pins, measure tape, ruler, 18 mm bias tape maker, seam ripper, needle, chalk, sewing machine

Difficulty

Beginner

Time

3-4 hours

Pattern

You can access the dress pattern by following this link [HERE](#) and the printable pocket pattern can be found [HERE](#). Remember to add seam allowances as indicated in the pattern.

Note that you'll also need to cut five 1.5 (3.8 cm) large strips of fabric on the

bias: one 24 long for the neckline, two 9 strips for the sleeve vents and two 7,75 for the cuffs. For detailed instructions on how to cut your bias tape please follow [this tutorial](#). Plus three small squares of fabric (0.75 x 1,5) for the button loops.

The diagram shows the pattern for US size 6-8 (UK size 8-10). If you need help grading your pattern, please follow [this tutorial](#).

Steps

Note: Prewash your fabric and tumble dry it until it is still slightly moist, dry in room temperature. Iron the fabric so it is easier to work with.

1. Before assembling the front and the back together, you need to sew the back slit and the button loop closure. [HERE](#) is a step-by-step tutorial on how to do it.



Now that you've finished sewing your back slit and the button loop (do not attach the button yet), you can gather and assemble the front and back panels. Let's start with the back panels.

2. Gather the bottom fabric to the length of the top panel. [HERE](#) is a step-by-step tutorial on how to gather your fabric. Be sure to use a contrast color thread and to secure your gathers once you've checked that the two panels match. As for the spacing of your gathers, to leave the sides ungathered and distribute your gathers evenly in the center back.



3. Pin the gathered bottom panel to the top panel right sides together.



4. Sew at a $\frac{3}{8}$ " (1 cm) seam allowance between the two stitch lines that you used for gathering.



5. Remove the gather stitches using your seam ripper. This is why it is

recommended to use a contrasting color thread – so that you don't make a mistake and rip out wrong stitches. Trim the fabric and serge or zigzag the raw edges together to prevent them from fraying in the future.



6. Press the seams flat folding the serged/zigzagged edges towards the bottom panel.



7. Repeat steps 2-6 for the front panels.



8. The next step is to assemble the front and the back together by pinning the shoulder seams right sides together.



9. Sew your shoulder seams at a $\frac{3}{8}$ " (1 cm) seam allowance. Trim, serge or zigzag the raw edges together to prevent them from fraying in the future. Press the seams flat folding the serged/zigzagged edges towards the back of your dress.



10. Bind the neckline following [this tutorial](#). Make sure that when you attach the binding, the serged/zigzagged shoulder seam edges are folded towards the back of your dress.

When you come to the back opening, tuck in the ends of your bias band as shown below:



Here's what your finished neckline will look like:

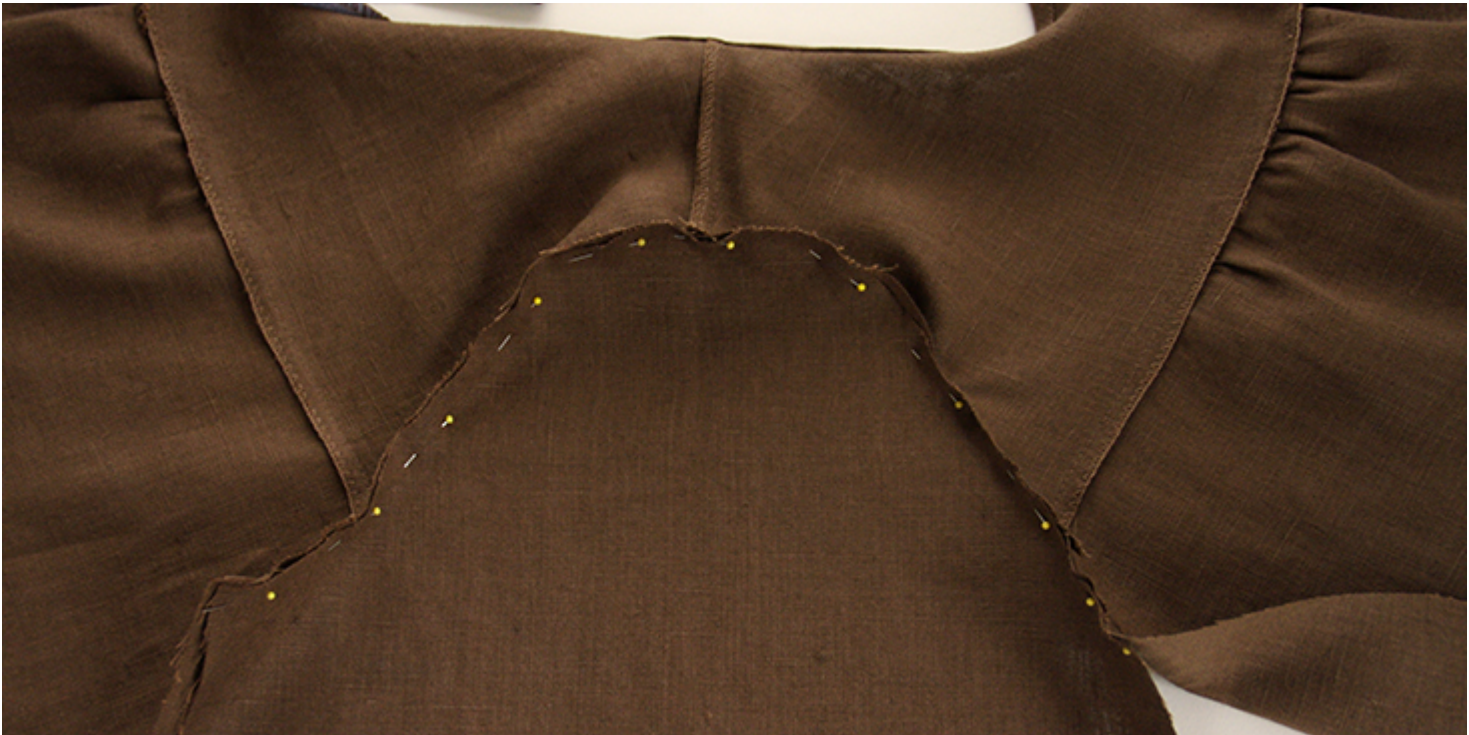


11. Before attaching the sleeves you need to sew continuous bound plackets on each sleeve. Follow [this detailed tutorial](#) to make the plackets but do not

attach the button loop closure yet, you'll do it later when you've attached the sleeves.



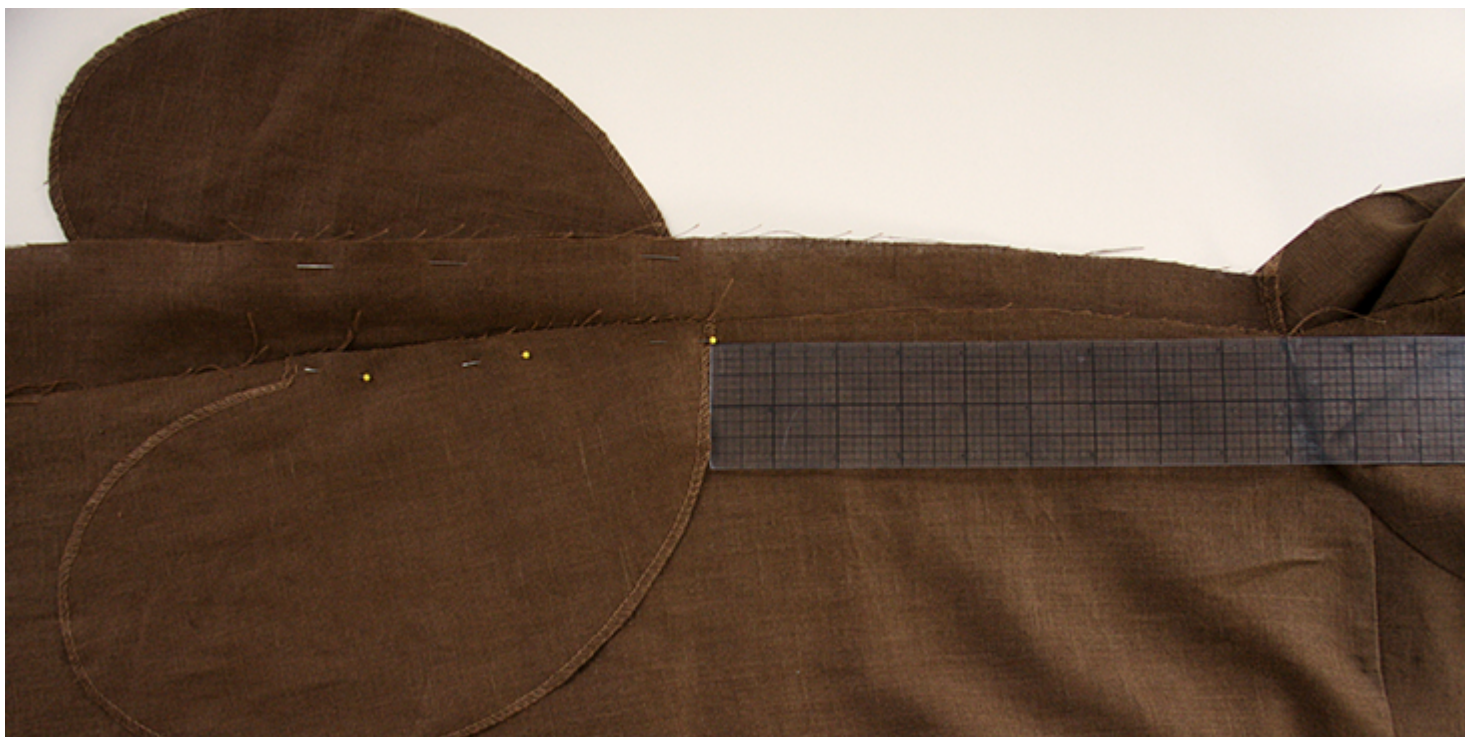
12. Now that you are done with the plackets, you can attach the sleeves to the bodices by pinning each sleeve fabric to the armhole fabric right sides together.



13. Stitch along the pinned edge at a 3/8" (1 cm) seam allowance. Trim, serge or zigzag the raw edges together to prevent them from fraying in the future. Press the seams flat folding the serged/zigzagged edges towards the sleeve panel.



14. It's time to sew the inseam pockets. Follow [this step-by-step tutorial](#) and place your pockets 9 from the underarm.

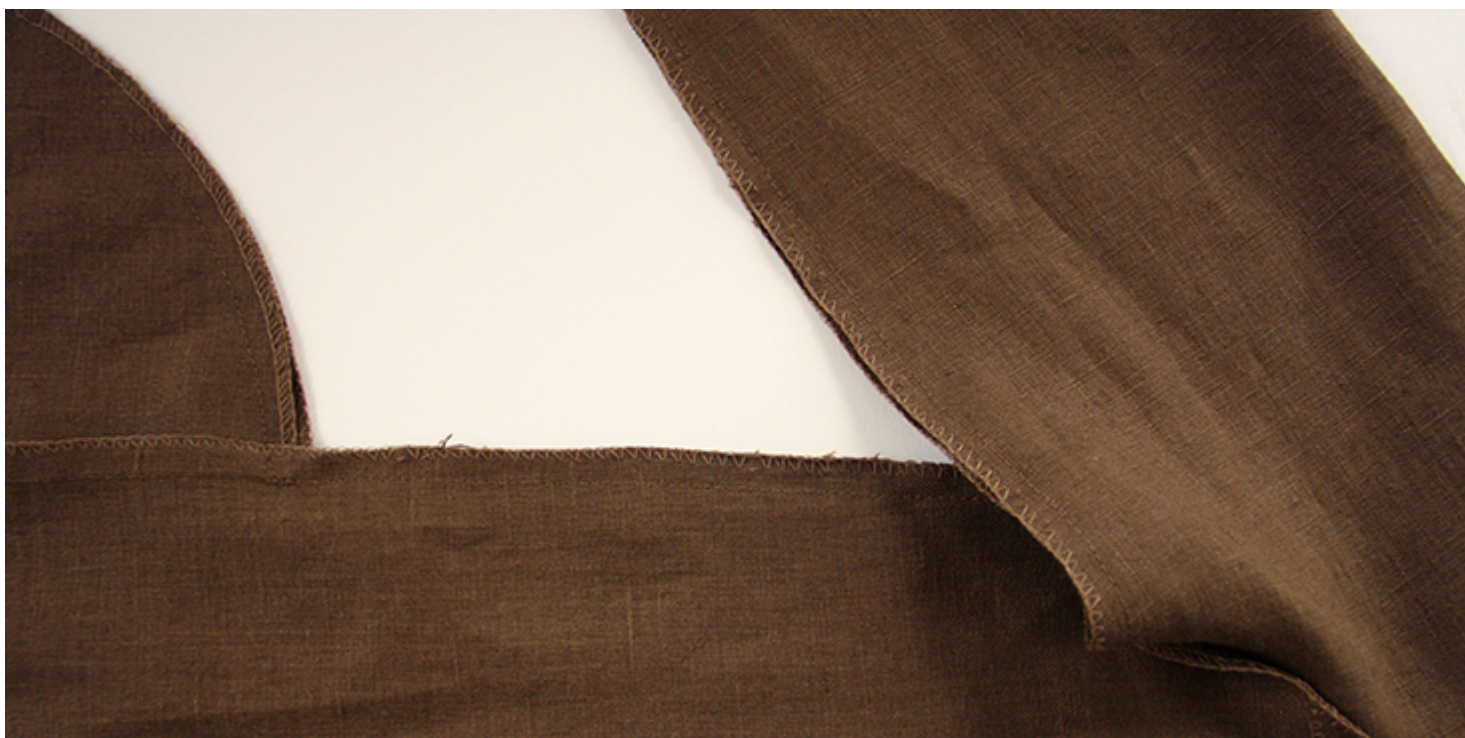


15. Pin the front and the back of the dress at the underarm, the sides seams

and the pockets right sides together.



16. Sew along the sleeves' underarms, side seams and the pockets all in one seam at a 3/8" (1 cm) seam allowance. Press the seam open.





17. Following [the same tutorial](#), sew the cuffs, attach the button loops and gather the sleeves to the width of your finished cuffs.





18. Attach the cuff.





19. Finish the bottom hem of your dress with a rolled hem: fold your fabric twice towards the wrong side, $\frac{3}{8}$ " to $\frac{1}{2}$ and edgestitch in place.



20. Lastly, attach the buttons to the neckline and the cuffs.



21. Give your dress a good last press and you are all done!

Why not have a look at the [plethora of fabric](#) we have to offer and see which colour takes your liking for this fabulous dress?

CATEGORY

1. FREE PATTERNS
2. TUTORIALS

Category

1. FREE PATTERNS
2. TUTORIALS

Date Created

February 6, 2018

Author

rima-khusainova